



<http://www.ofic.co.jp>

# The Reliable Strength To Make Creations Reality

Corporate Profile

OSAKA FUJI Corporation

1-9-1 Jokoji, Amagasaki-shi, Hyogo 660-0811 Japan  
TEL: +81-6-6487-1865 (main) FAX: +81-6-6488-1623

OSAKA FUJI Corporation



# The reliable strength to make creations reality

**In the areas of steel and manufacturing,  
we create added value that lead to business solutions.**

Since our founding in 1955, OSAKA FUJI Corporation has partnered with and met the various needs of major steel manufacturers. We have utilized the know-how cultivated during this process to expand our business into welding, thermal spraying and machining.

Today, we have further expanded beyond the steel manufacturing field to meet the needs of a wide variety of customers such as electronics, heavy industries, paper and IT related companies.

Regardless of how times may change in the future, our corporate stance of honestly giving it our all will never change. Every one of our employees will work together and we will continue to obsess on what "only OSAKA FUJI Corporation can achieve" so that we will be able to share in the joy of our customers.



President and CEO  
**Dai Oshima**

## Message from our CEO

We have grown with the changing times, bringing people together and creating unique technology that industrial society demands.

Our personnel are at the heart of OSAKA FUJI Corporation. We have kept our minds on improving our technology through joining forces with one another since our foundation, thus allowing us to support to our client's manufacturing activities.

The words "good faith" are symbolic of this for us.

"Good faith" stands for spirit of OSAKA FUJI Corporation. It means that we will do everything in our means in a sincere and relentless effort for each and every client of ours. The intentions of our founder can be condensed down to this word. Each of our personnel has to be mindful of this sincere intention when engaging in all of their work, in order to contribute to the welfare of clients, our personnel and their families, and society.

Our utmost priorities are both to ensure personal safety, and to comply with honesty to the demands of not only law and ordinances but also to society's needs; and we are exhaustive in our efforts to achieve these.

As a manufacturing related corporation, we utilize an array of unique technology to benefit society and our customers but to serve our own self-satisfaction. We lend an earnest ear to the needs of the coming generation and to the voices of clients as we develop and make progress with original technology; all the while maintaining a desire to seek out new challenges. All of this is what comes together to form the excellent service and technology provided here at OSAKA FUJI Corporation. Our field of work is growing alongside the changing times, and will continue to expand to a global stage. But no matter what changes we see in our industry or in society over time, we will never forget our initial driving force, good faith. And it is with that good faith that we will make each and every step forward a safe and secure one, continuing to grow steadily.

# With our 3 prominent “strengths”, we support manufacturing from every angle

What we are proud of most at OSAKA FUJI Corporation, with the accumulation of our proven track record since our founding, is that we are continuously polishing our strengths of “Quality Strength”, “Technological Strength” and “Development Strength.” We will continue to answer to the trust entrusted to us and push forward as a company that supports the manufacturing business of our customers from every angle.



## Quality Strength

At OSAKA FUJI Corporation, we have a thorough and strict quality control system for every process from the receiving of orders to delivery. In addition, each of our factories have acquired ISO9000 series quality management certifications, providing assured product quality.

Amagasaki Plant	JIS Q 9001/ISO9001	Registration number: 4325
Omigawa Plant	JIS Q 9001/ISO9001	Registration number: 3212
Senboku plant	JIS Q 9100 JIS Q 9001/ISO9001	Registration number: A4210
	Nadcap Coatings	Certificatenumber:11906771136
Soja Plant	JIS Q 9001/ISO9001	Registration number: 1958



## Technological Strength

With our close cooperative relationship with major steel manufacturers, we have established a firm technological foundation that includes the highest levels of welding technology in the country and thermal spraying technology that utilizes the latest precision equipment. In addition, we have expanded this technological foundation into new fields as well.



## Development Strength

We engage in research and development mainly at Technology center in order to meet needs that are becoming increasingly complex and diversifying with the times. Furthermore, we are promoting the development of new technologies and materials that are ahead of the times in cooperation with industry, academia and the government.

Quality  
Strength

Technological  
Strength

Development  
Strength

## Technology Center

Technology Center promotes development and “technology-deepening”

### Development

Creating surface modification technology that supports the foundations of the manufacturing industry

Through overlay welding and thermal spraying technologies, technological development for functional deposit forming with various qualities such as corrosion resistance, wear resistance, scoring resistance and impact resistance are promoted. Using the technologies that we have developed, we greatly contribute to advanced product development in various fields.



### Technology deepening

New solution is provided with the latest overlay technology. Using LMD (Laser Metal deposition), high quality crack-free coating out of a large range of materials can be produced with metallurgical bonding, low dilution, and minimum heat affected zone. We provide new solution with the latest technology to clients' problem of all industries, from steel-plant huge roll to needle tip.





Steel Making

© NIPPON STEEL & SUMITOMO METAL CORPORATION

A photograph showing a large industrial facility with a glowing orange molten metal stream being processed on a conveyor system.



Overlay Welding

A photograph of a robotic welding arm in a dark industrial setting, with a bright light source from the welding process.




Thermal Spraying

A photograph showing a thermal spraying process where a bright light is directed at a series of metal panels.

# OFIC

Continuing to support the "origins" of the industrial world through outstanding technology and sincere stance

Starting from repair work for ingot cases, we now provide steel business related services such as line production management, quality control, safety management as well as mechanical equipment design and machinery maintenance. We have expanded our business to meet the demands of the times in areas such as overlay welding, thermal spraying and machining.



Machining

A photograph of a large industrial machine, possibly a lathe or mill, with a worker in a blue uniform and yellow hard hat operating it.



Slicing Process

A photograph of a large industrial machine with a complex structure, likely used for slicing or processing materials.

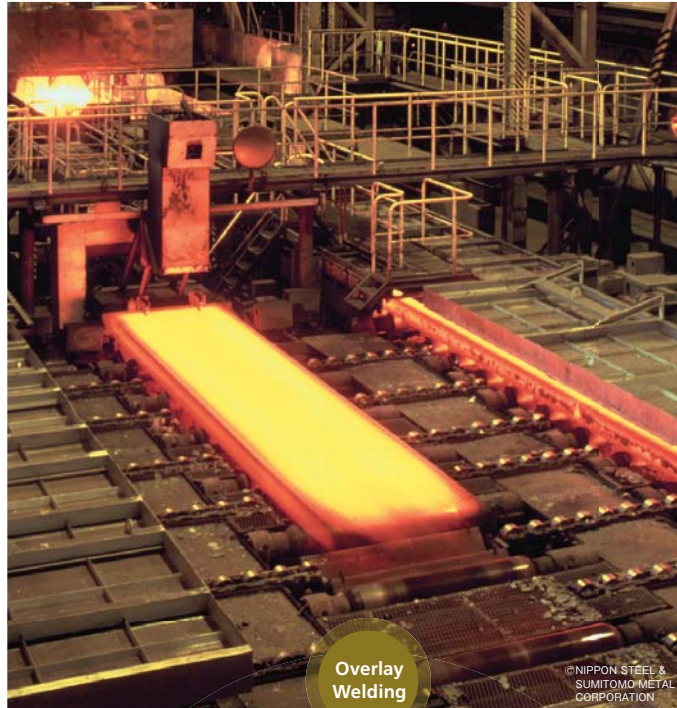


Group Companies

A photograph of an airport tarmac with several cargo planes and ground support equipment.

# Steel Making

Total integrated conducting of various process operations on the manufacturing lines of major steel manufacturers from manufacturing management to quality control, machinery equipment design and equipment maintenance.



OSAKA FUJI Corporation has undertaken total integrated performance of manufacturing lines operations for major steel manufacturers for over half a century. In order to perform these duties, there is a need for highly precision in everything from safety, quality and operations. We at OSAKA FUJI Corporation has reliably performed these duties and have established ourselves as a partner with unwavering, solid reliability. In addition, we have been highly regarded from our customers as a company that can comprehensively accommodate a wide variety of processes, not only steel manufacturing but also overlay welding, thermal spraying and machining.

Overlay Welding

## Steel Making

Accommodating everything from the steel manufacturing business to overlay welding, thermal spraying and machining.

Machining

Thermal Spraying

# Machining

Accommodating the processing of large items to complex processing using large scale machining centers and 5-Axis Machining Cantors.

We are able to promptly and accurately accommodate large, 30-ton class items with our extensive equipment including large scale machining centers and 5-Axis Machining Cantors.



5-Axis Machining Cantors



NC Boring



Large Scale NC Lathe



5-Axis Machining Center

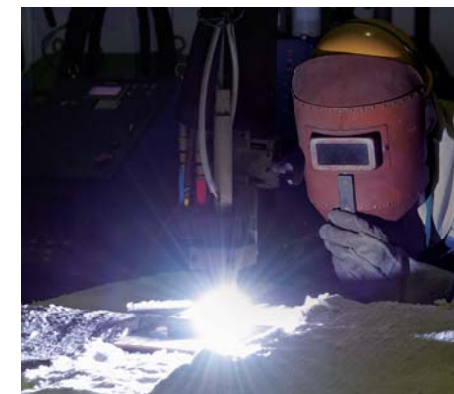
# Overlay Welding

We are good at automatic hardfacing using powdered Plasma Transferred Arc, realizing surface modification of materials.



OSAKA FUJI Corporation possess welding technologies that are among the highest levels in the industry. We specialize in "overlay welding" that is used for surface modification and repair, and we continue to pursue the improvement of these technologies. Overlay welding not only contributes to improved performance and reduction in costs of parts, but also to energy savings and the use of less raw materials. We also are good at highly efficient submerged arc welding and powdered Plasma Transferred Arc to form functional deposit utilizing special materials developed by our company. Starting with coordination with major steel manufacturers, we now have expanded into various industries including industrial machinery, paper and automobile manufacturing to develop new possibilities that overlay welding possesses.

## PTA (powdered Plasma Transferred Arc)



Amagasaki Plant features high performance PTA automatic overlay systems. Automating highly precise overlay welding leads to cost reduction and reduction of lead times.



Submerged Arc Welding (SAW) with strip electrode for small scale rolls

Overlay welding on Continuous Casting (CC) rolls using automated band welding equipment



SAW with strip electrode for large scale rolls

Overlay welding using band welding on large scale



Multi-electrode arc welding

Multi-electrode Metal Active Gas (MAG) welding that realizes high speed and efficiency



Automatic welding using robots

Overlay welding on Continuous Casting (CC) rolls using robots



Feeder Overhaul of feeders

Total maintenance on feeders for a paper manufacturing company that includes everything from overlay maintenance and reassembly

## Forged Steel Roll Manufacturing

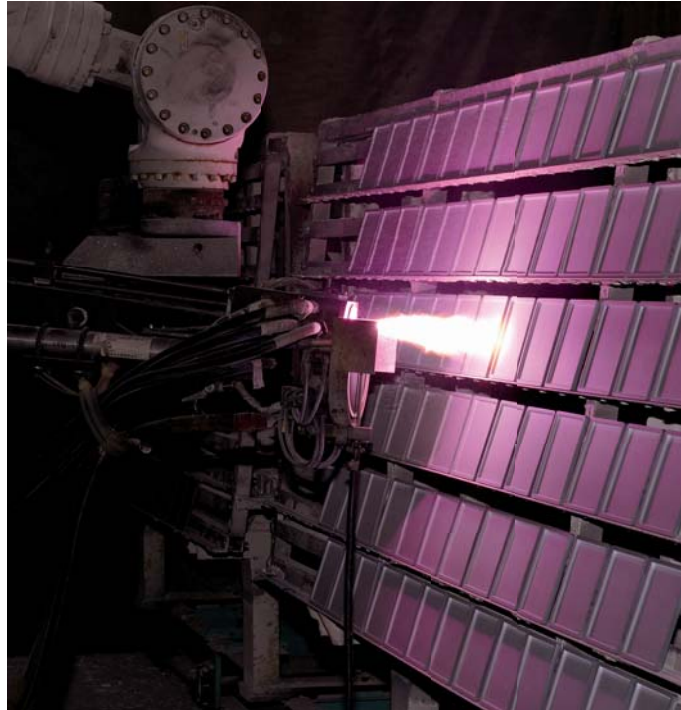
Forged Steel rolls are manufactured by hardening high cleanliness steel obtained through a special refining process of select raw materials. Through the accumulation of years of technology, we are able to create rolls that high toughness and hardness, along with increased case depth, which are highly regarded.



Tempering of rolls

# Thermal Spraying

Realizing optimal thermal spraying utilizing the latest equipment, including automated robots and plasma thermal spraying equipment.



By spraying a variety of materials using combustion flames and electrical energy and adhering them to the substrate, thermal spraying adds functionality to these substrate. At OSAKA FUJI Corporation, we utilize our extensive array of equipment such as robots and plasma thermal spraying equipment to deliver the highest level of thermal spraying technology. In particular, we pride ourselves in an outstanding track record in regards to ceramic spraying, where we are able to provide thermal spraying of deposit 20mm thick. In addition to thermal spraying of boiler tubes used in heat power plants, we are able to perform work on-site as well. Our light-footedness is also highly regarded.

## JISQ9100 Acquisition of the Quality Management Systems - Requirements for aviation, space and defense organizations

The Quality Management Systems - Requirements for aviation, space and defense organizations, is a guarantee of a higher level of quality required for manufacturing related to the aviation, space and defense industries. At OSAKA FUJI Corporation, our Thermal Spraying Business (Semboku Plant) has acquired this certification.



Thermal spraying onto turbine blades

Thermal spraying onto gas turbine components using high velocity oxy-fuel spraying for thermal insulation, and temperature and oxidation resistance



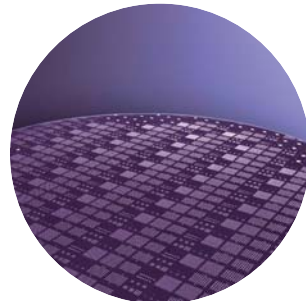
Plasma spraying onto carbon sheets

Formation of accurate and stable coating using robot control



Thermal spraying onto boiler panels

Thermal spraying onto boiler tubes used in heat power plants as a measure to prevent damage

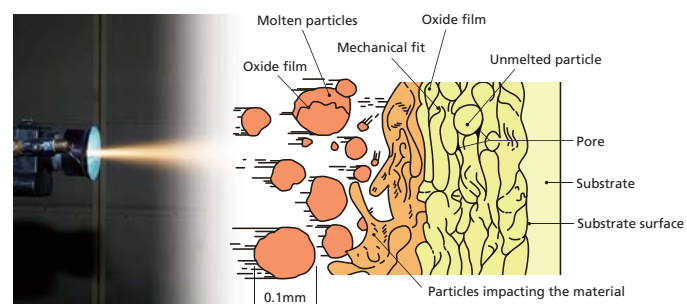


Thermal spraying onto IT and semiconductor related components

Formation of a highly pure deposit by performing thermal spraying in clean thermal spraying booths

### How thermal spraying works

This is a technology that takes metal and ceramics are heated until they are completely or partially melted state and collides them on substrate surface to create a deposit. The need for this technology exists in a variety of industrial fields including aviation, power generation and automobiles. We have consistently diversified thermal spraying material to meet these needs.



### Implementing quality inspections using thermal spraying flame monitoring equipment (Accura Spray)

By using thermal spraying flame monitoring equipment, we are able to show using numbers, the temperature, speed, and brightness of the melted particles, enabling us to perform quality inspections just prior to the particles impacting the material.



# Slicing Process

Slicing a variety of materials including quartz, ferrite materials and solar panel silicon wafers using "professional workmanship."



OSAKA FUJI Corporation are the pioneers in the industry when it comes to slicing silicon wafers for solar panels, with years of experience in the field. By utilizing our extensive array of equipment such as multi-wire saws, we are able to accurately and promptly accommodate everything from small lots to processing of mass production lots. We perform everything in-house from the accepting of ingots to delivery of the products. In addition, by utilizing our accumulated know-how, we are actively moving forward in the processing of new materials such as quartz, hyper processing resistant metal materials and ceramics. We can flexibly accommodate and meet needs that diversify with the times.



Multi-wire saw



Large-scale band saw



Slicing machine with inner blade



Inspection of all products using an automated inspection machine



Slicing Process Department can handle large volume production

# Group Companies

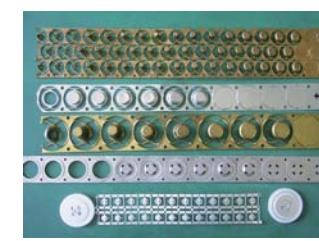
Utilizing the strength of our group to deploy a wide range of services.



Handling of baggage and cargo at airports



Processing of quartz products that support semiconductor manufacturing



Precision metal press processing for electric and electronic components



Dispatching of personnel in various fields and operations as an insurance agent

# With our high technological capabilities and wealth of experience, our objective at OFIC is global deployment.

Since our founding, OSAKA FUJI Corporation has consistently supported the manufacturing efforts of our customers and grown with them. To match the increasing speed of international expansion by our customers in recent years, as their partner, we are also promoting global deployment centered in Asia. By exerting and utilizing the skills and abilities that we have developed in Japan on the world stage, we will contribute to the resolving of various issues.

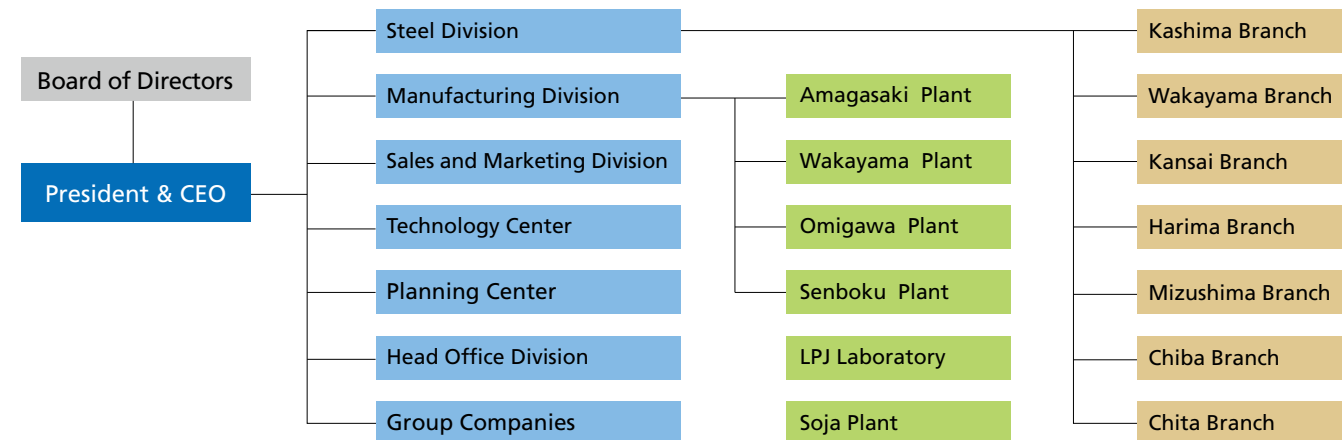
## Company Profile

**Name** OSAKA FUJI Corporation  
**Head Office** 1-9-1 Jokoji, Amagasaki-shi, Hyogo 660-0811 Japan Phone:+81-6-6487-1865 / Fax:+81-6-6488-1623  
**Representative** Dai Oshima, President and CEO  
**Established** March 19, 1955  
**Capital** \$1,180,875 (¥94.47 million)  
**Businesses** Steel manufacturing process work, machining, welding and thermal spraying, engineering, design and manufacture of industrial machinery, and slicing process  
**Major customers** Nippon Steel & Sumitomo Metal Corporation / JFE Steel Corporation / Kobe Steel, Ltd. / MITSUBISHI HITACHI POWER SYSTEMS, LTD.



VIETNAM OSAKA FUJI CO.,LTD.

## Organizational Chart



- Head Office
- Division/Department
- Plant
- ▲ Sales Department
- Group Company



Amagasaki Plant (Hyogo)



Wakayama Plant (Wakayama)



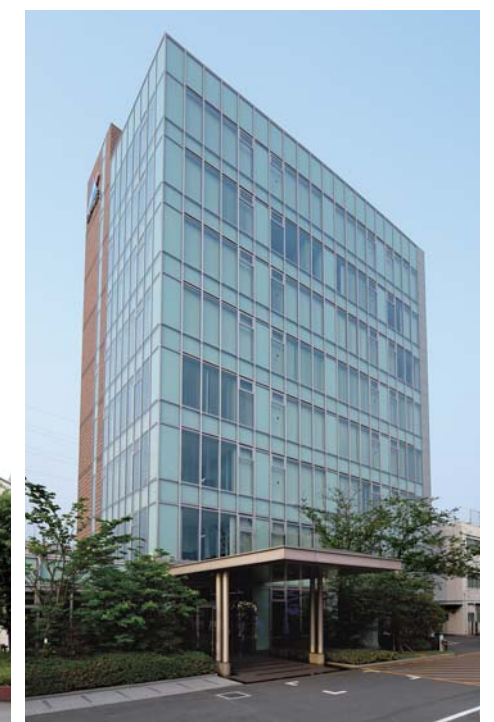
Omigawa Plant (Chiba)



Senboku Plant (Osaka)



Soja Plant (Okayama)



Head Office (Hyogo)